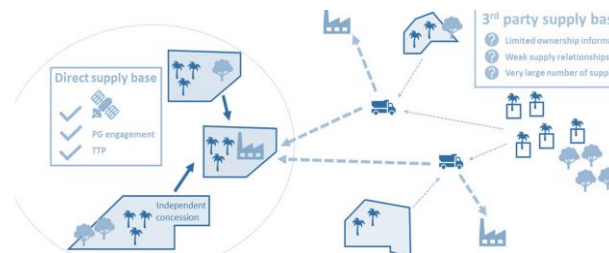
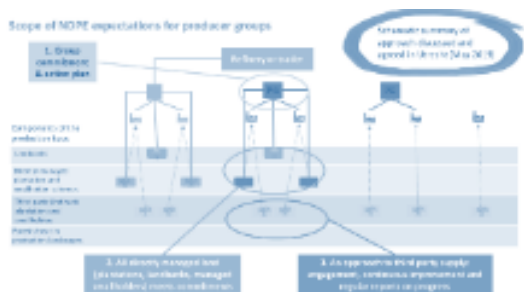


POCG

Palm Oil Collaboration Group



In person meeting
Kuala Lumpur, Malaysia
22 June 2022



**Welcome back to
the in-person space of POCG!**

A few housekeeping notes...



Statement of compliance

This meeting shall not result in any discussions, activity or conduct that may infringe on any applicable competition law.

By way of example, participants shall not discuss, communicate or exchange, any commercially sensitive information, including information relating to prices, marketing and advertising strategy, costs and revenues, trading terms and conditions with third parties, including purchasing strategy, terms of supply, trade programs, or distribution strategy. If any participant has any question regarding the legality of proposed discussion the subject should stop immediately.

Introduction and opening POCG Co-Convenors



Introductions



At your tables introduce yourselves to each other including

- The company you work for
- Where you are based
- Something positive about the last two years

Each table choose one person to feed back to us all

- The companies at your table
- The different countries they are based

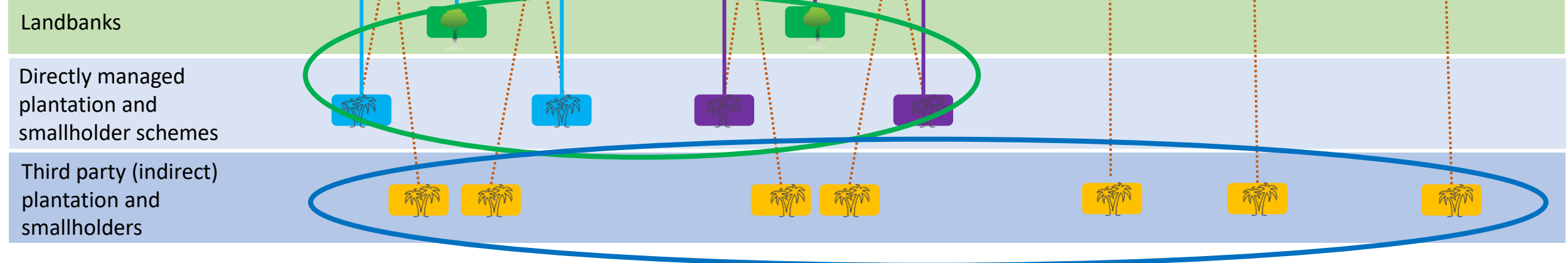
Summary of where we are on delivering NDPE from the Bangkok Nov 2019 meeting

Directly managed plantations, smallholder schemes and landbanks

- ✓ A lot of progress but still a lot more to do
- Focus on maximising delivery for 2020 especially deforestation
- Ensure progress on 'no exploitation'

IG = integrated group
 PG = Producer Group
 Ind = Independent mill

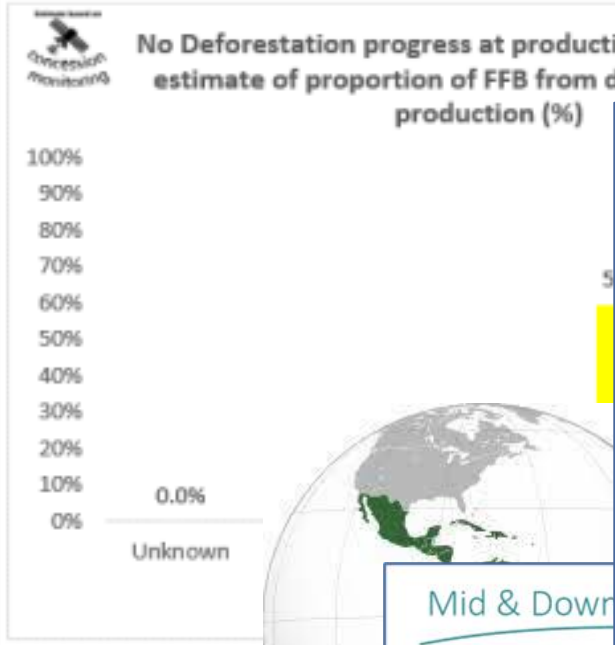
Components of the production base



Third party plantations & smallholders and forest/peat in the wider landscape

- ✓ Many activities underway for third party production
- Understand where we are and what still needs to be done
- Understand options to address challenges (eg deforestation, smallholder engagement) and align and collaborate

Progress since we last met



Human Rights Library

This is a digital library of tools for downstream Human Rights Due Diligence (HRDD) approaches. The HRDD concept is defined by the United Nations Human Rights as:

"An ongoing management process that a company needs to implement in order to identify, prevent, mitigate and account for how companies add their adverse human rights impacts."

New to the HRDD Process?

- Read this short brief on how HRDD can be applied by palm oil, available in Bahasa, English and Spanish
- Link to most relevant guidance resources

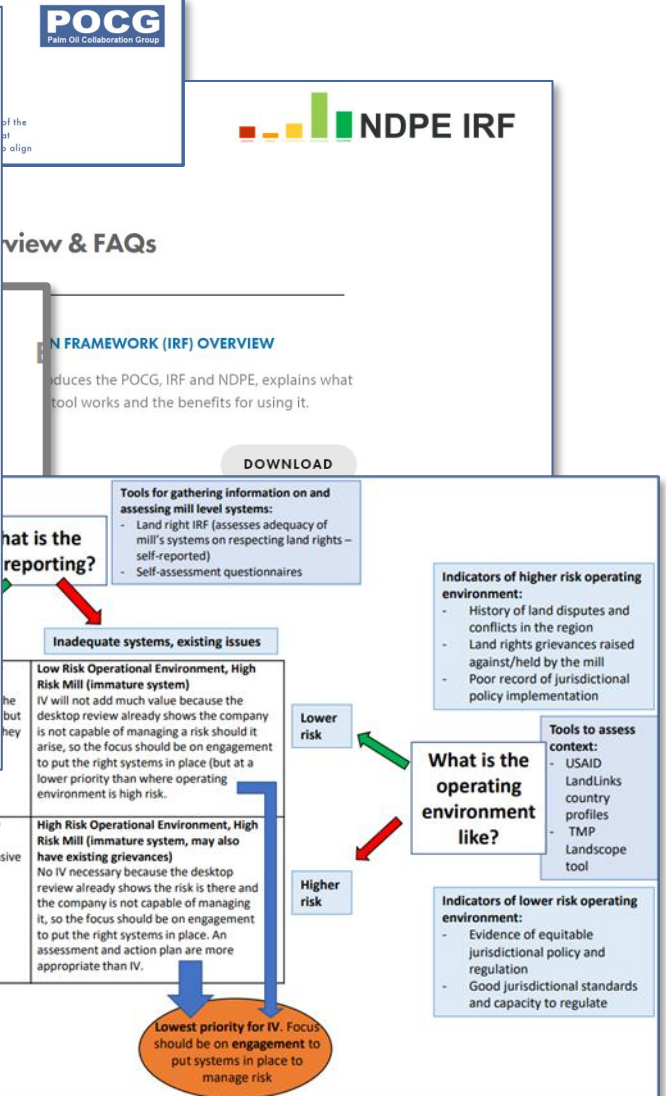
Mid & Downstream Mills

Focus on supply chain management

- Gathering & maintaining traceability data for ISHs/dealers (traceability to production, inc risk based)
- Implementing basic due diligence protocols with new suppliers (w/ dealers where required)
- Sharing ISH supply data with buyers as needed for monitoring
- Cooperation & support in verifying (and where appropriate responding) to def events
- Beyond supply chain: where appropriate participate in or provide in-kind support to activities implemented by customers

NDPE IRF – Labour rights allocation criteria – for piloting - May 2022

IRF categories	Unknown origin	Known origin	Awareness	Commitment and starting action (FFB from owned mill plantations)	Commitment and starting action (FFB from third party producers)	Progressing (FFB from owned mill plantations)	Progressing (FFB from third party producers)	Delivering (FFB from owned mill plantations)	Delivering (FFB from third party producers)
Certification				100% of volume received from the mill is ISPO certified		100% of volume received from mill is MSPO certified OR RSPO Mass Balance certified		100% of volume received from the mill is RSPO Identify Preserved certified	
Mill performance allocation criteria	Mill location/co ordinates are not known (volume untraceable to mill)	Mill location/co ordinates are known (volume traceable to mill)	Mill has been part of an NDPE workshop or similar which included labour rights as a topic over the last 3 years	Mill or parent company has commitments on respecting labour rights that meet the elements listed in the guidance (Or has signed up to a buyer's commitment)	Mill or parent company has commitments on respecting labour rights that meet the elements listed in the guidance (Or has signed up to a buyer's commitment)	Mill is meeting elements under Commitment and starting action	Mill is meeting elements under Commitment and starting action	Mill is meeting elements under Progressing	Mill is meeting elements under Progressing
				OR	AND	AND	AND	AND	AND
			OR	Mill has senior management staff accountable for the implementation of labour rights commitments	Mill has senior management staff accountable for the implementation of labour rights commitments.	Mill has conducted risk assessments on challenges and impacts to labour rights in their own operations	Mill has conducted risk assessments on challenges and impacts to labour rights of its third-party supply base	Mill has a permanent ongoing system for two-way communication between workers and management to discuss, address and report labour issues	Mill has system in place to engage and support third party suppliers in meeting labour rights commitments (for certain suppliers such as independent smallholders, this should include providing support and capacity building)
			OR	AND	AND	AND	AND	AND	AND



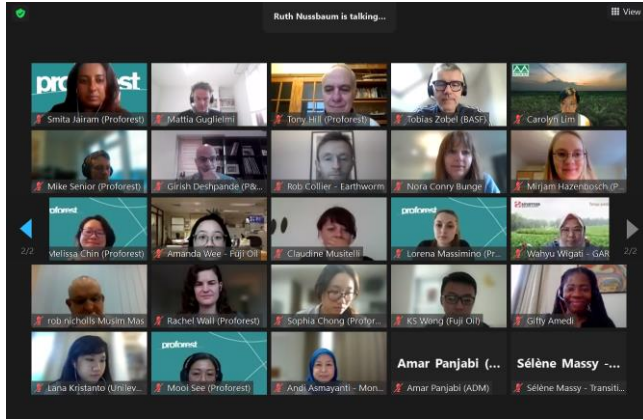
capacity building with T1s (10 or other)

Beyond supply chain: financial support focused on high priority areas commensurate with company's production footprint

AMBITION: The Coalition will translate landscapes into forest positive lands

- Taking action and collaborating with stakeholders in areas equivalent to Coalition's combined production (in hectares) by 2030; and
- Living their influence to catalyze transformation

FPC landscape strategy . p. 1



Stakeholder Engagement

Consultation Group

Clearer Governance

Prioritisation of activities

Practicality of approaches

Aligning over Zoom

Looking forward to next steps



SESSION	TIMING	LOCATION
Day 1 (22nd June 2022)		
Arrival	9.00 - 9.15	
Introduction	9.15 - 10.00	Connexion conference and event centre (Zenith junior Ballroom)
Social IRF session 1: Introduction and next steps	10.00 - 13.00	
Lunch	13.00-14.00	
Social IRF session 2: Third party supply focus	14.00 - 17.30	
Dinner	19.00 - 22.00	The Farm Foodcraft (Unit G-01 & G-02, Level Ground, The Sphere)
Day 2 (23rd June 2022)		
Discussion session 1: Actions for supporting progress (Deforestation and Peat IRF)	10.00 - 13.00	Connexion conference and event centre (Grand)
Lunch	13.00 - 14.00	
Satellite monitoring discussion: D and P IRF templates pre-population	14.00 - 14.45	
Discussion session 2: Roadmap for social issues, a collective road forward	15.00 - 17.30	

IRF promotional video launch

